

[illegible]

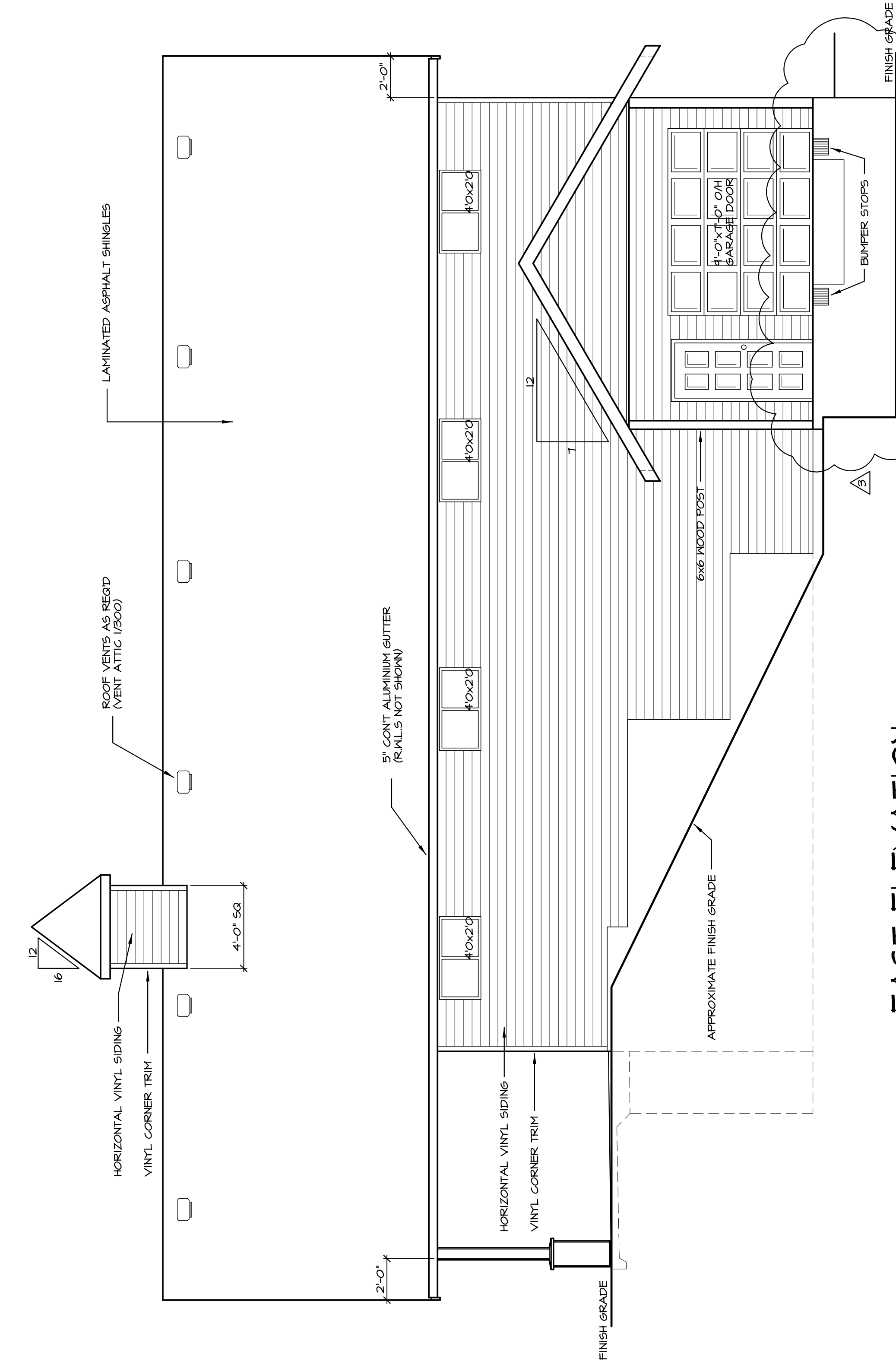
ST. JOSEPH'S CHURCH  
FOOD BANK

PROJECT :

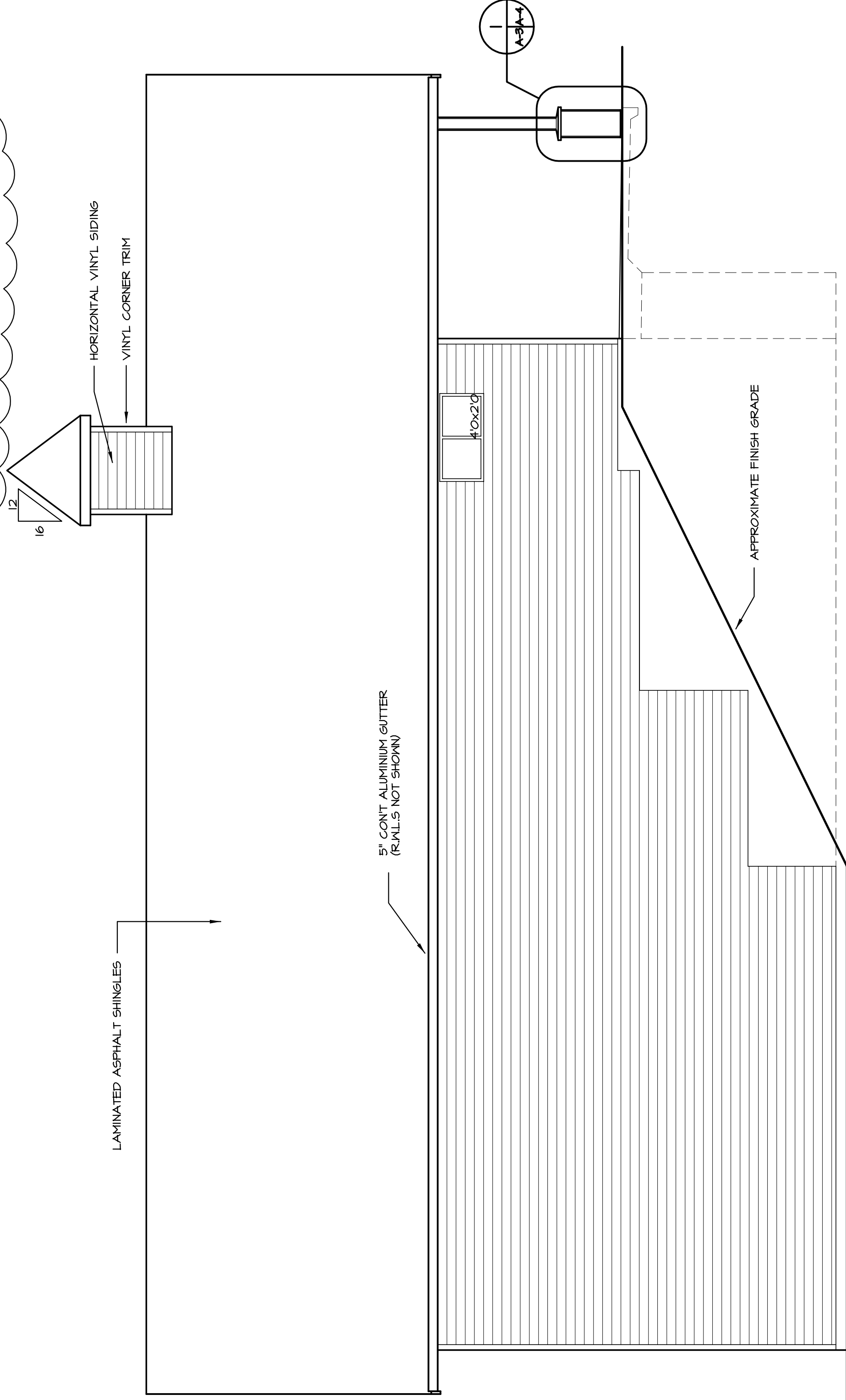
# BUILDING ELEVATIONS

CONSULTANT:

DATE :	JULY 2010
SCALE :	1/4" = 1'-0"
JOB NO :	TWIO12
DR :	JV
SHEET	

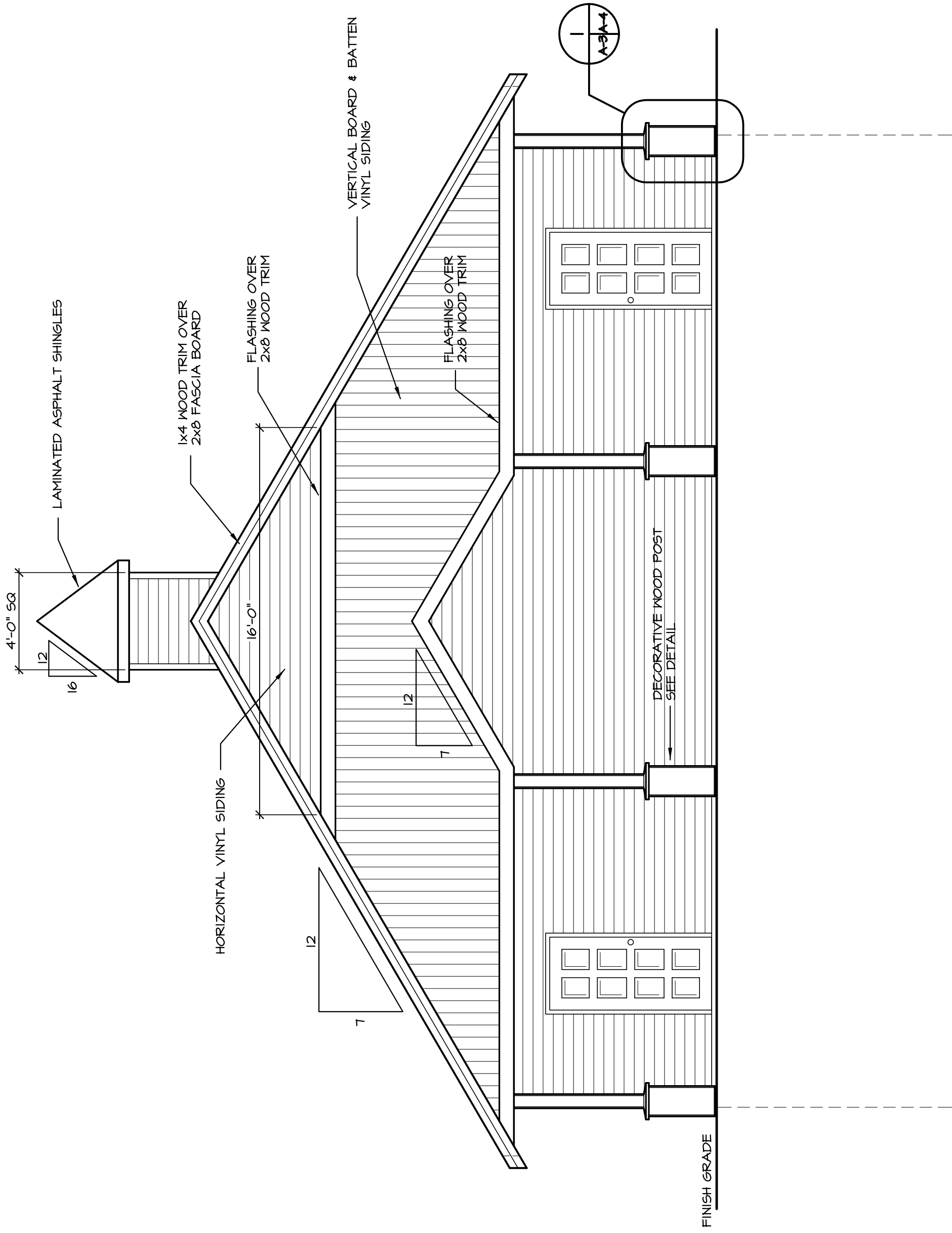


## EAST ELEVATION

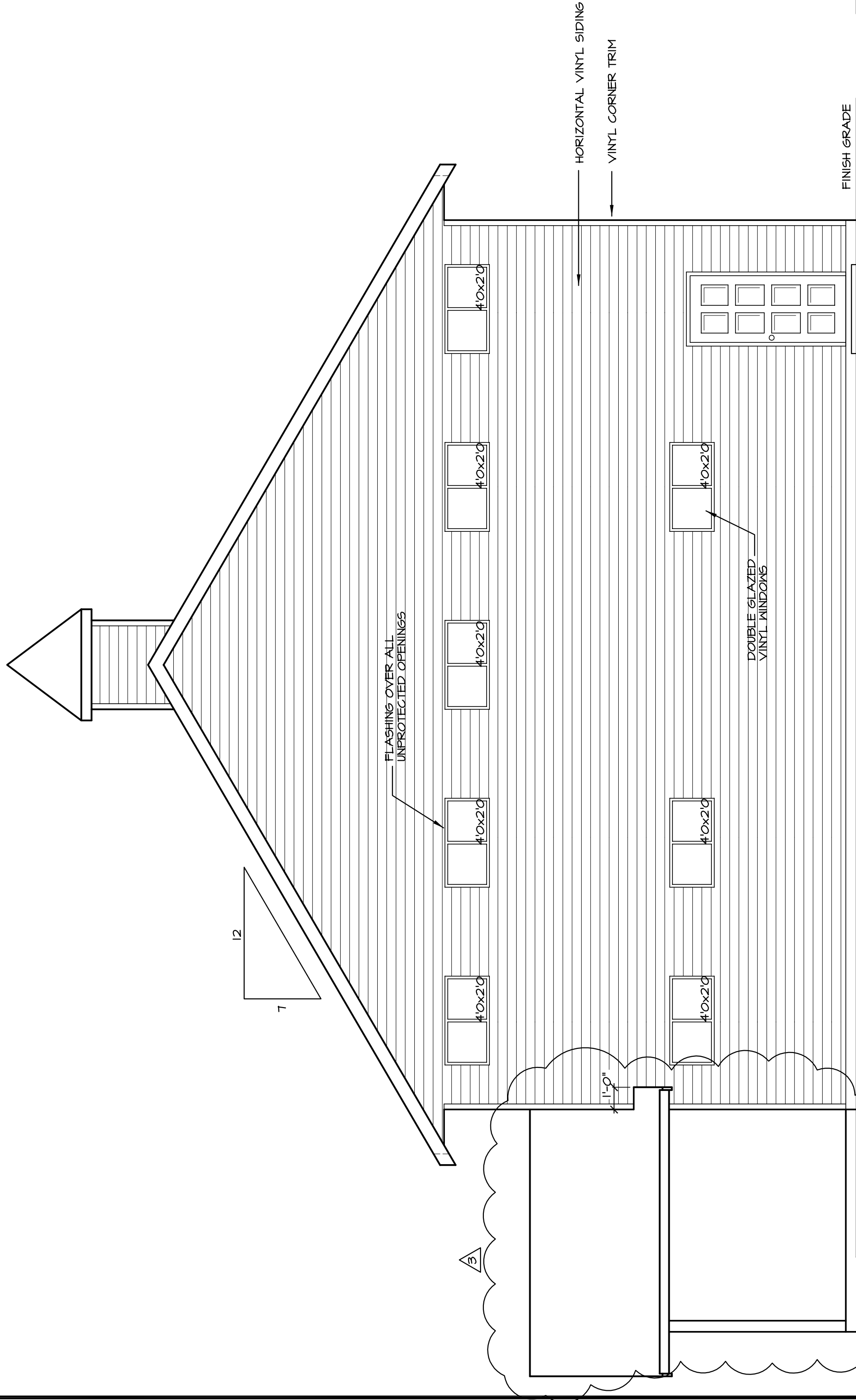


## WEST ELEVATION

SPATIAL CALCULATIONS:  
WALL AREA = 755 S.F. (70m<sup>2</sup>)  
LIMITING DISTANCE = 15'-0" (4.572m)  
UNPROTECTED OPENINGS ALLOWED = 18.5%  
UNPROTECTED OPENINGS SHOWN = 1.06%



NORTH ELEVATION



# SOUTH ELEVATION